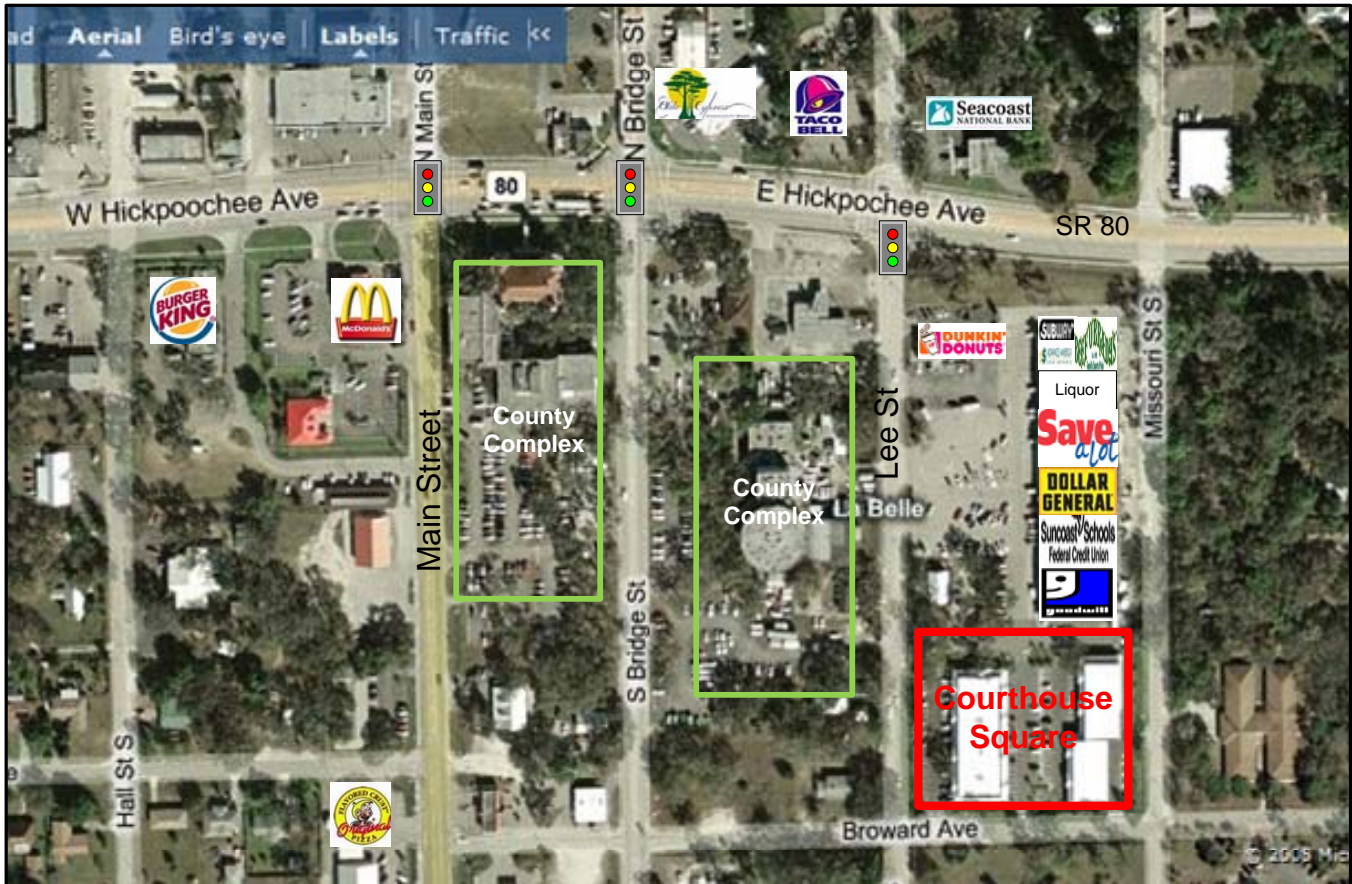




# Courthouse Square

LaBelle, Florida



- \* Adjacent to County Courthouse
- \* Convenient Downtown Location
- \* Located next to busiest shopping center in Labelle

Information contained herein deemed reliable but not warranted

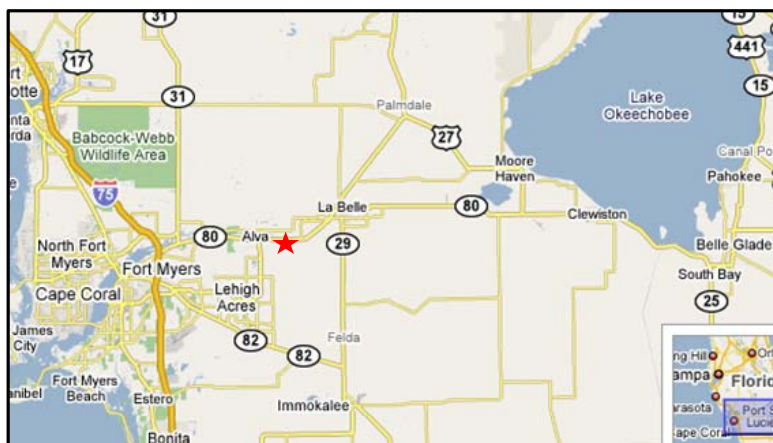
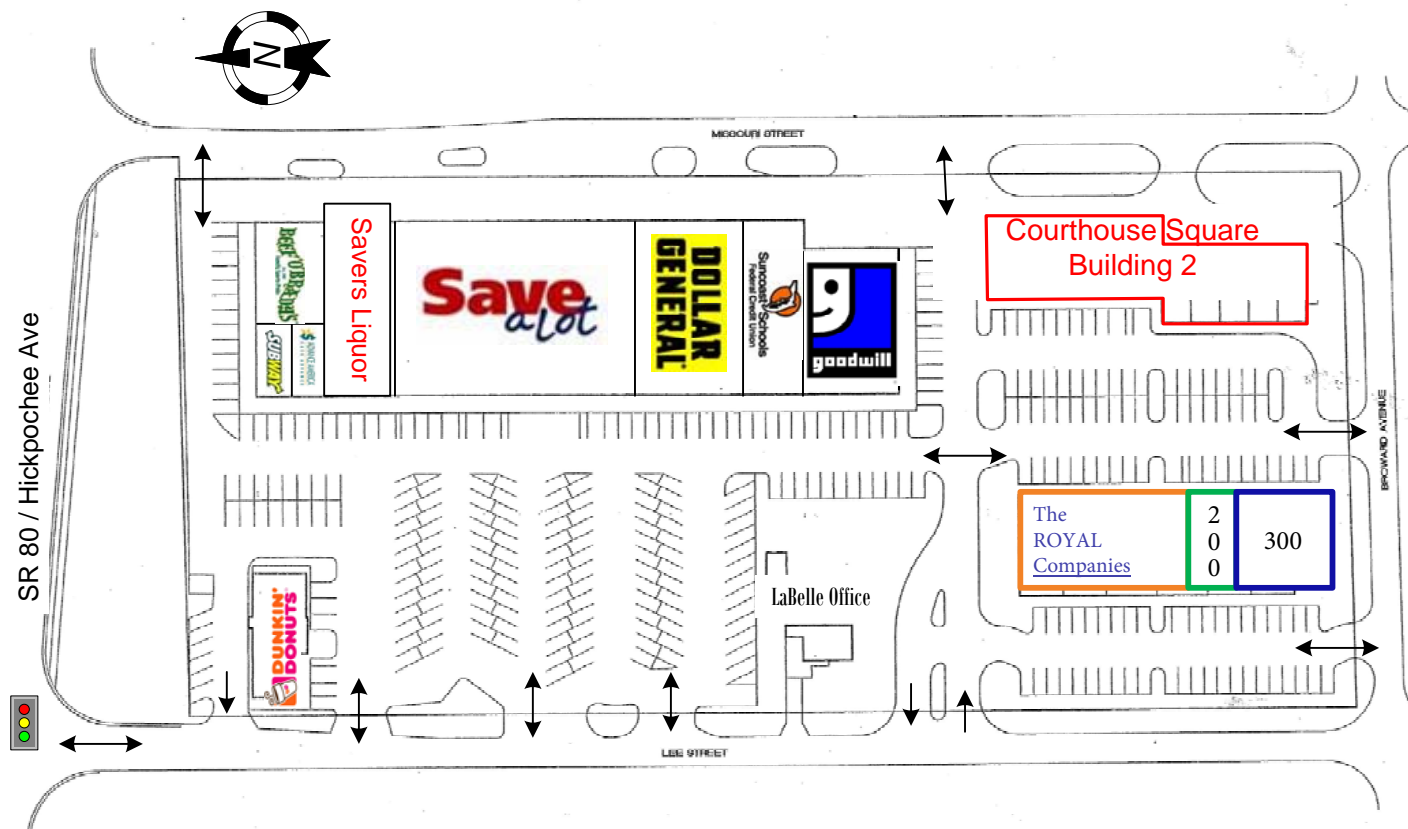
Area Facts within 5 miles:

- \* 2013 Population 17,826
- \* 2013 Average Household Income \$ 56,580
- \* 2013 Traffic Count 13,200



# Courthouse Square

LaBelle, Florida



## Building 1- Space Available

Suite 100 = The Royal Companies Office

Suite 200 = 1,400 square feet

Suite 300 = 4,550 square feet

## Building 2 - Space Available

**\*Offers bays at 1,100 sf each**

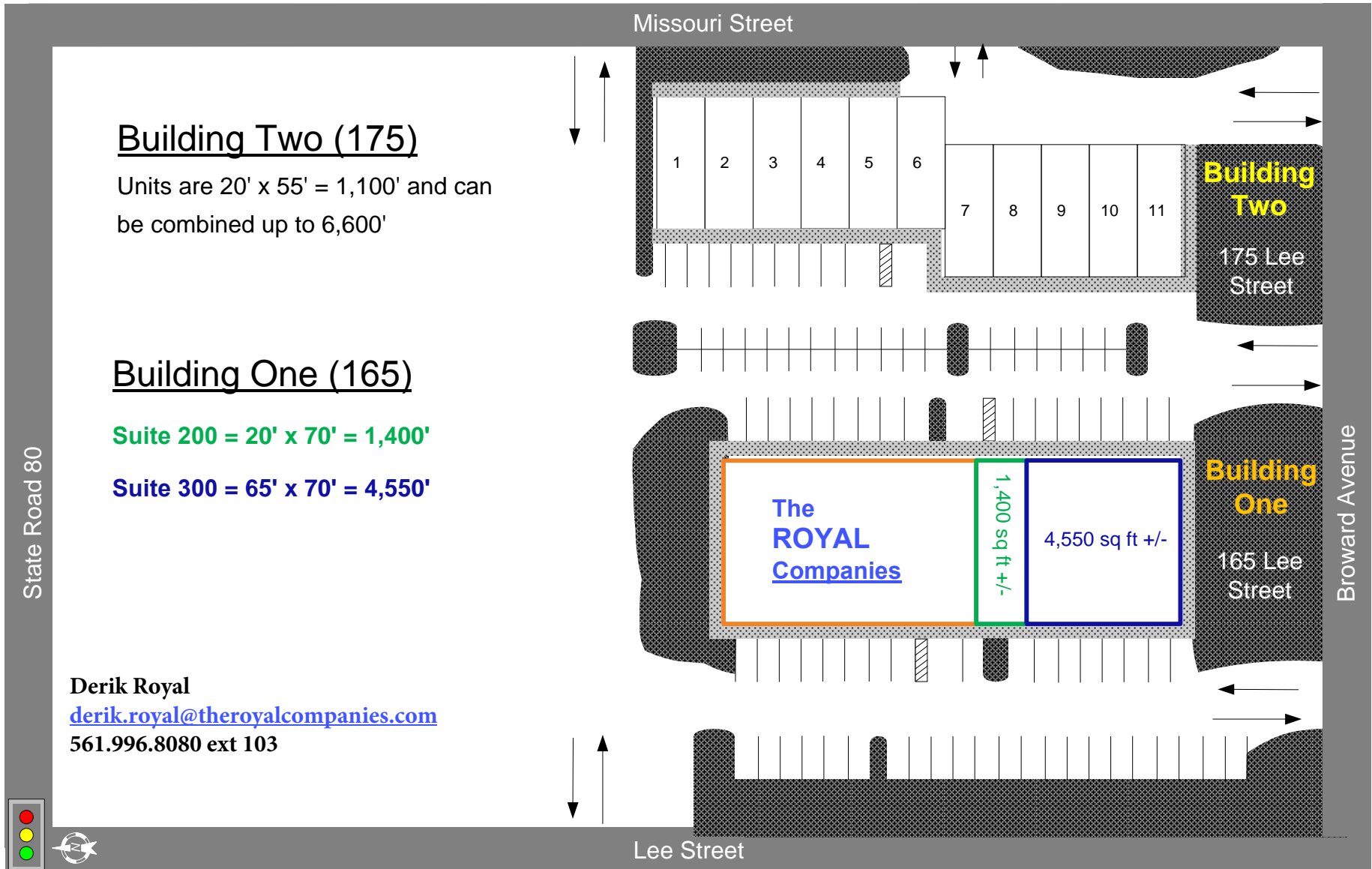
**\*Units can be combined side by side for flexible configurations**

Information contained herein deemed reliable but not warranted

**165 South Lee Street - Suite 100 - Labelle, FL 33935**  
**Phone: 561-996-8080** [www.theroyalcompanies.com](http://www.theroyalcompanies.com)

# Courthouse Square Labelle, Florida

06-09-2016  
scale 1" = 60'



*For location purposes only!*

The information above has been obtained from sources believed reliable. While we do not doubt its accuracy we have not verified it and make no guarantee, warranty or representation about it. It is your responsibility to independently confirm its accuracy and completeness. Any projections, opinions, assumptions, or estimates used are for example only and do not represent the current or future performance of the property. The value of this transaction to you depends on tax and other factors which should be evaluated by your tax, financial, and legal advisors. You and your advisors should conduct a careful, independent investigation of the property to determine to your satisfaction the suitability of the property for your needs.





**DIRECTIONAL**  
**PROPERTIES, INC.**

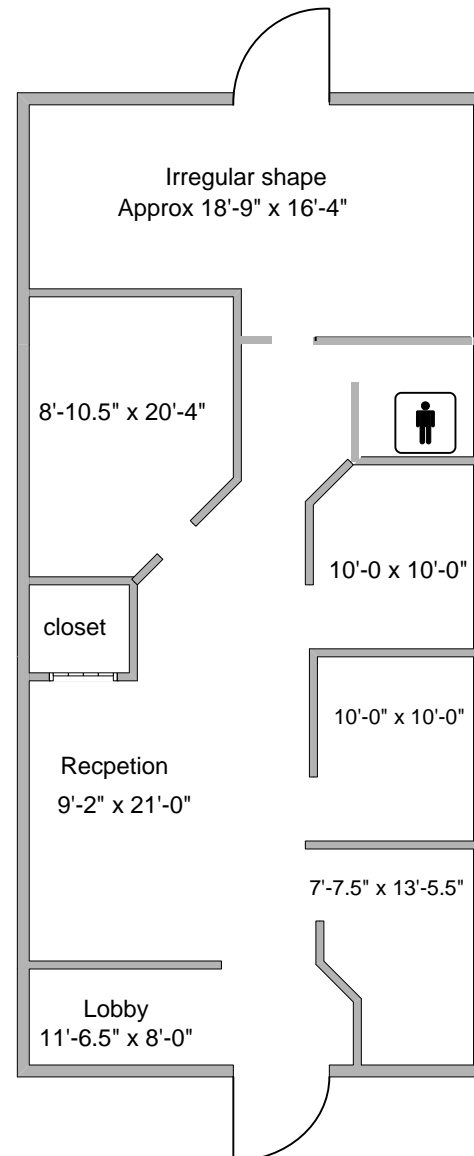
**Derik Royal**  
[derik.royal@theroyalcompanies.com](mailto:derik.royal@theroyalcompanies.com)  
**561.996.8080 ext 103**

## **Suite 200**

**Courthouse Square**  
**165 South Lee Street**  
**LaBelle, Florida**



**20' x 70' = 1,400 sq. ft.**



**2007 Construction**

**Multiple Configuration Possibilities**

**Stable Community**

**Walk to Plaza Shoppes  
and  
Courthouse**

**165 South Lee Street - Suite 100 - Labelle, FL 33935**  
**561.996.8080** [www.theroyalcompanies.com](http://www.theroyalcompanies.com)



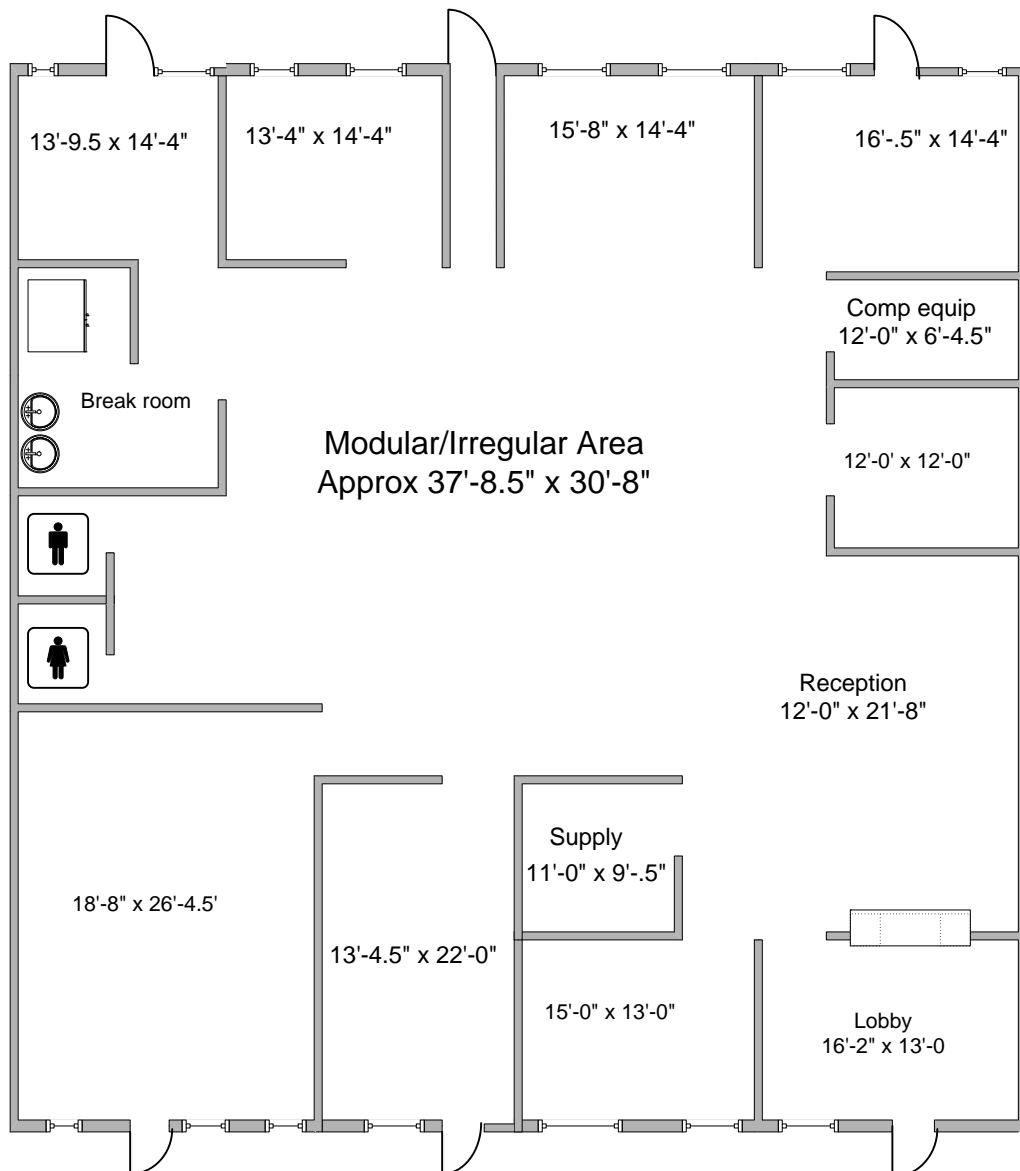
**DIRECTIONAL**  
**PROPERTIES, INC.**

Derik Royal  
[derik.royal@theroyalcompanies.com](mailto:derik.royal@theroyalcompanies.com)  
561.996.8080 ext 103

## **Building One - Suite 300**

**Courthouse Square**  
**165 South Lee Street**  
**LaBelle, Florida**

**65' x 70' = 4,550 sq. ft. +/-**



**Turnkey  
Professional Offices**

**2007 Construction**

**Flexible Space  
Configuration**

**Desirable Location**

**Ample Parking**

**165 South Lee Street - Suite 100 - Labelle, FL 33935**  
**Phone: 561-996-8080 [www.theroyalcompanies.com](http://www.theroyalcompanies.com)**



**DIRECTIONAL  
PROPERTIES, INC.**

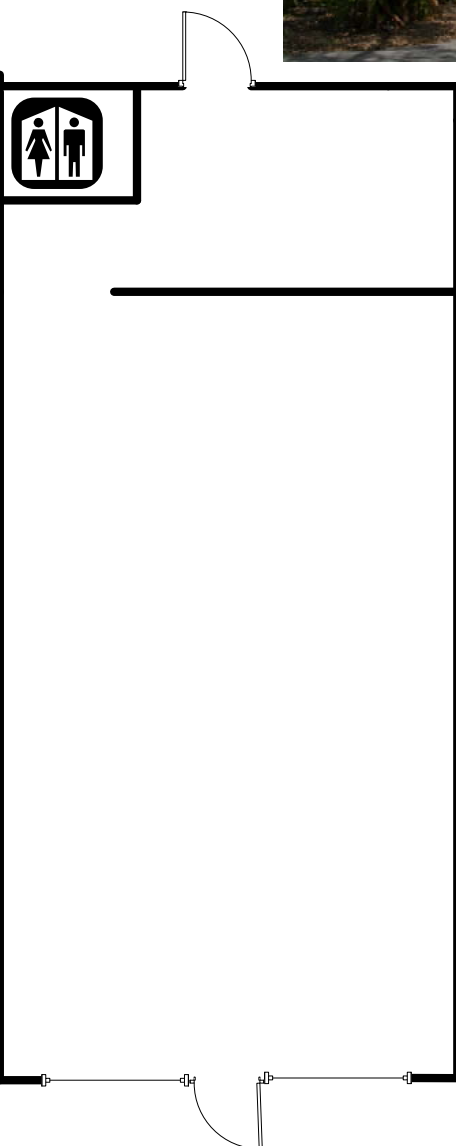
Derik Royal  
[derik.royal@theroyalcompanies.com](mailto:derik.royal@theroyalcompanies.com)  
561.996.8080 ext 103

## **Building Two** **Conceptual Layout**

**Courthouse Square**  
**175 S. Lee Street**  
**LaBelle, Florida**



**20' x 55' = 1,100'**



**2007 Construction**

**Professional,  
Retail, Medical &  
Office Space**

**Excellent Visibility**

**Easy Access**

**Flexible Space  
Configurations**

**Walk to Plaza  
Shoppes  
and  
Courthouse**

**Ample Parking**

**Desirable Location**

**165 South Lee Street - Suite 100 - Labelle, FL 33935**  
**Phone: 561-996-8080 [www.theroyalcompanies.com](http://www.theroyalcompanies.com)**