



THE  
ROYAL  
COMPANIES

Contact: Steve Royal  
561-996-8080 ext 107  
[steve.royal@theroyalcompanies.com](mailto:steve.royal@theroyalcompanies.com)

## Courthouse Square

165-175 South Lee Street  
LaBelle, Florida



- ☞ Build to suit interiors available.
- ☞ Adjacent to County Courthouse.
- ☞ Located next to Labelle Plaza including Save-a-Lot, Beef 'O' Brady's, Subway and more.



### Building 1- 165 South Lee St

- Suite 100 – The Royal Companies.
- Suite 200 - Silky's Group Home.
- Suite 300 – Available 4,550 sf.



### Building 2 – 175 South Lee St

- Offers bays starting at 1,100 sq ft.
- Bays can be combined.
- Easily accessible from any direction.



165 S Lee Street, Suite 100, Labelle, Florida 33935 Telephone: 561-996-8080  
[www.theroyalcompanies.com](http://www.theroyalcompanies.com)





THE  
ROYAL  
COMPANIES

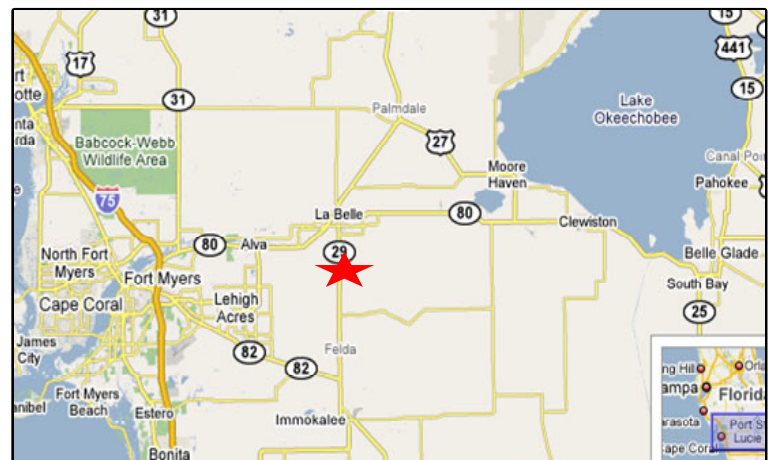
Contact: Steve Royal  
561-996-8080 ext 107  
[steve.royal@theroyalcompanies.com](mailto:steve.royal@theroyalcompanies.com)

## LABELLE, FLORIDA 33935.



### Area Facts:

- Population 24,965 in 20 min drive.
- Average Household Income \$57,990.
- Traffic Count 19,300.



- Easy access to State Road 80 and State Road 29 with traffic light.

Information contained herein deemed reliable but not warranted



165 S Lee Street, Suite 100, Labelle, Florida 33935 Telephone: 561-996-8080  
[www.theroyalcompanies.com](http://www.theroyalcompanies.com)



# Courthouse Square Labelle, Florida

01/11/2019  
scale 1" = 60'

## Building Two – 175 S. Lee

Units are 20' x 55' = 1,100' and can be combined up to 6,600'

## Building One – 165 S. Lee

Suite 100: The Royal Companies

Suite 200: Silky's Group Home

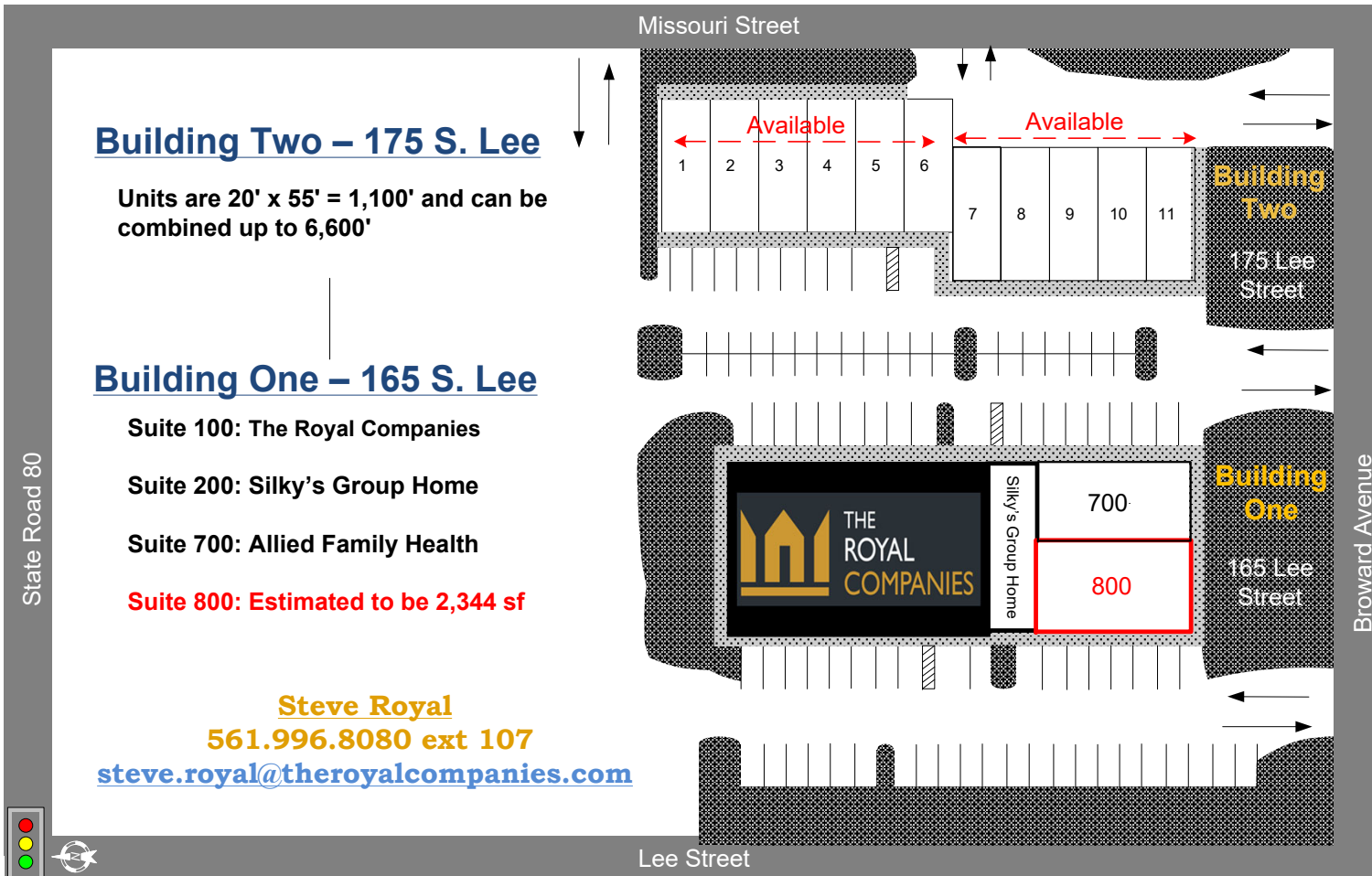
Suite 700: Allied Family Health

Suite 800: Estimated to be 2,344 sf

**Steve Royal**

**561.996.8080 ext 107**

[steve.royal@theroyalcompanies.com](mailto:steve.royal@theroyalcompanies.com)



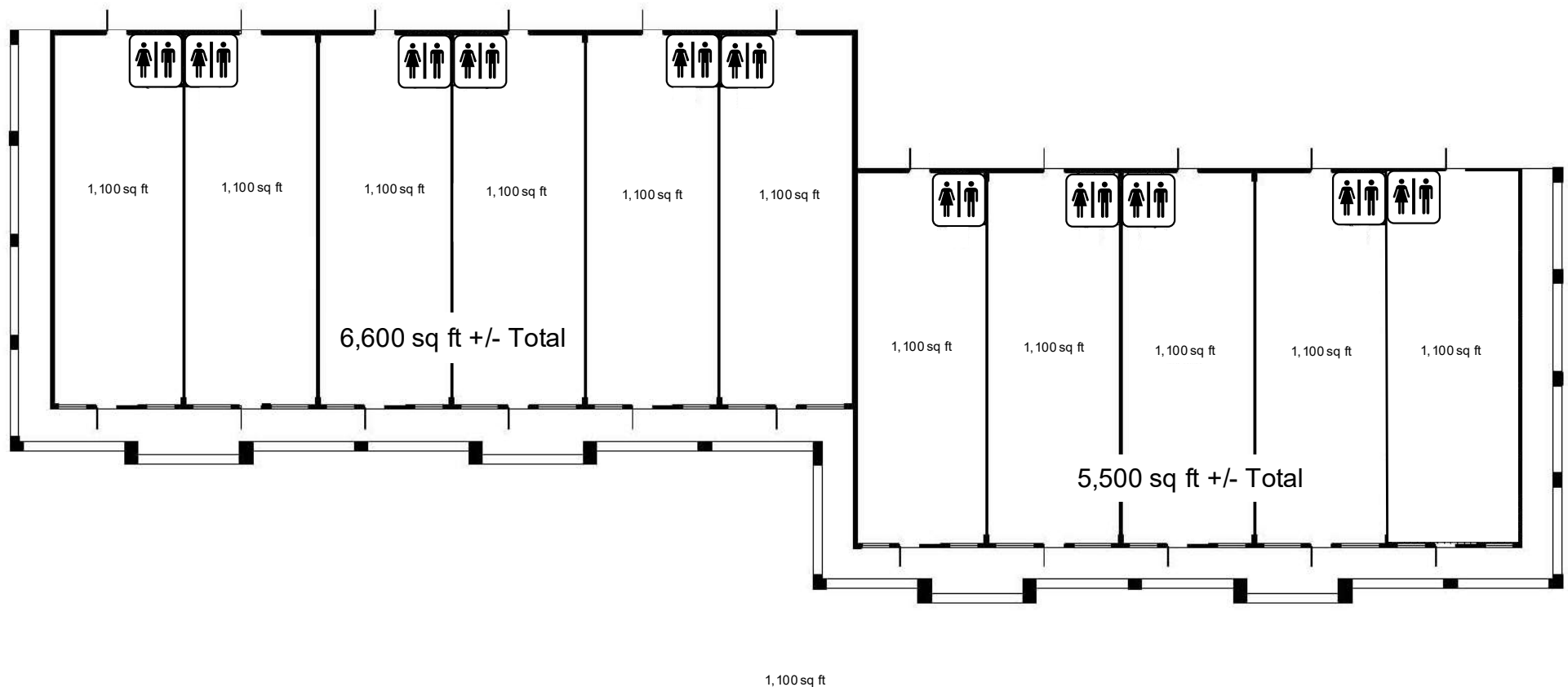
*For location purposes only!*

The information above has been obtained from sources believed reliable. While we do not doubt its accuracy we have not verified it and make no guarantee, warranty or representation about it. It is your responsibility to independently confirm its accuracy and completeness. Any projections, opinions, assumptions, or estimates used are for example only and do not represent the current or future performance of the property. The value of this transaction to you depends on tax and other factors which should be evaluated by your tax, financial, and legal advisors. You and your advisors should conduct a careful, independent investigation of the property to determine to your satisfaction the suitability of the property for your needs.



THE  
ROYAL  
COMPANIES

Contact: Steve Royal  
561-996-8080 ext 107  
[steve.royal@theroyalcompanies.com](mailto:steve.royal@theroyalcompanies.com)



This plot plan is for location purposes only. It shall not be relied on for any other purpose

Information contained herein deemed reliable but not warranted



165 S Lee Street, Suite 100, Labelle, Florida 33935 Telephone: 561-996-8080  
[www.theroyalcompanies.com](http://www.theroyalcompanies.com)

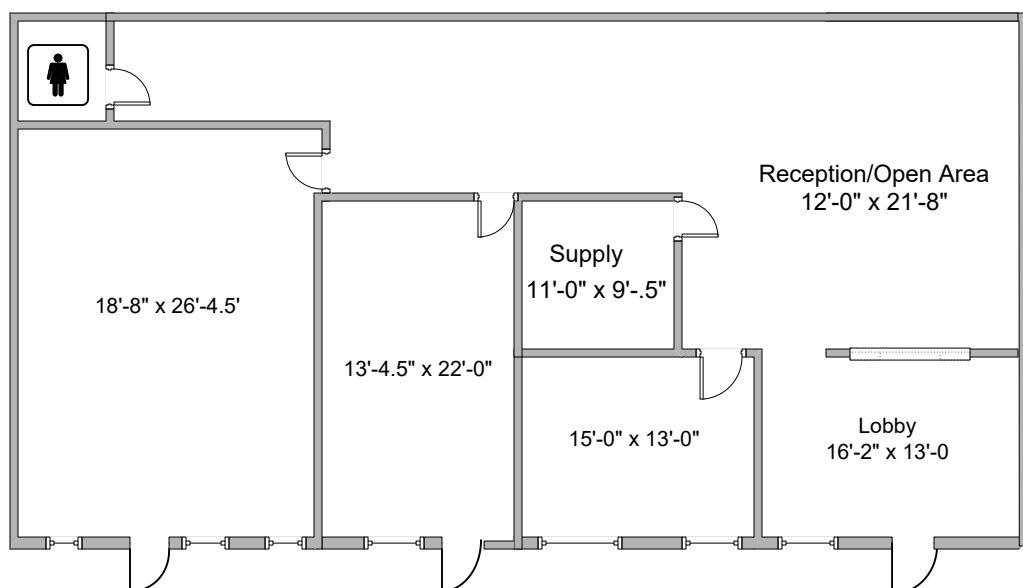




# Courthouse Square

Building 1 – Suite 800  
Approximately 2,344 sf

- Turnkey Professional Offices
- Desirable Location
- Ample Parking
- 2007 Construction
- Across the street from County Courthouse



Information contained herein deemed reliable but not warranted





THE  
ROYAL  
COMPANIES

Contact: Steve Royal  
561-996-8080 ext 107

[steve.royal@theroyalcompanies.com](mailto:steve.royal@theroyalcompanies.com)

# Courthouse Square Building Two

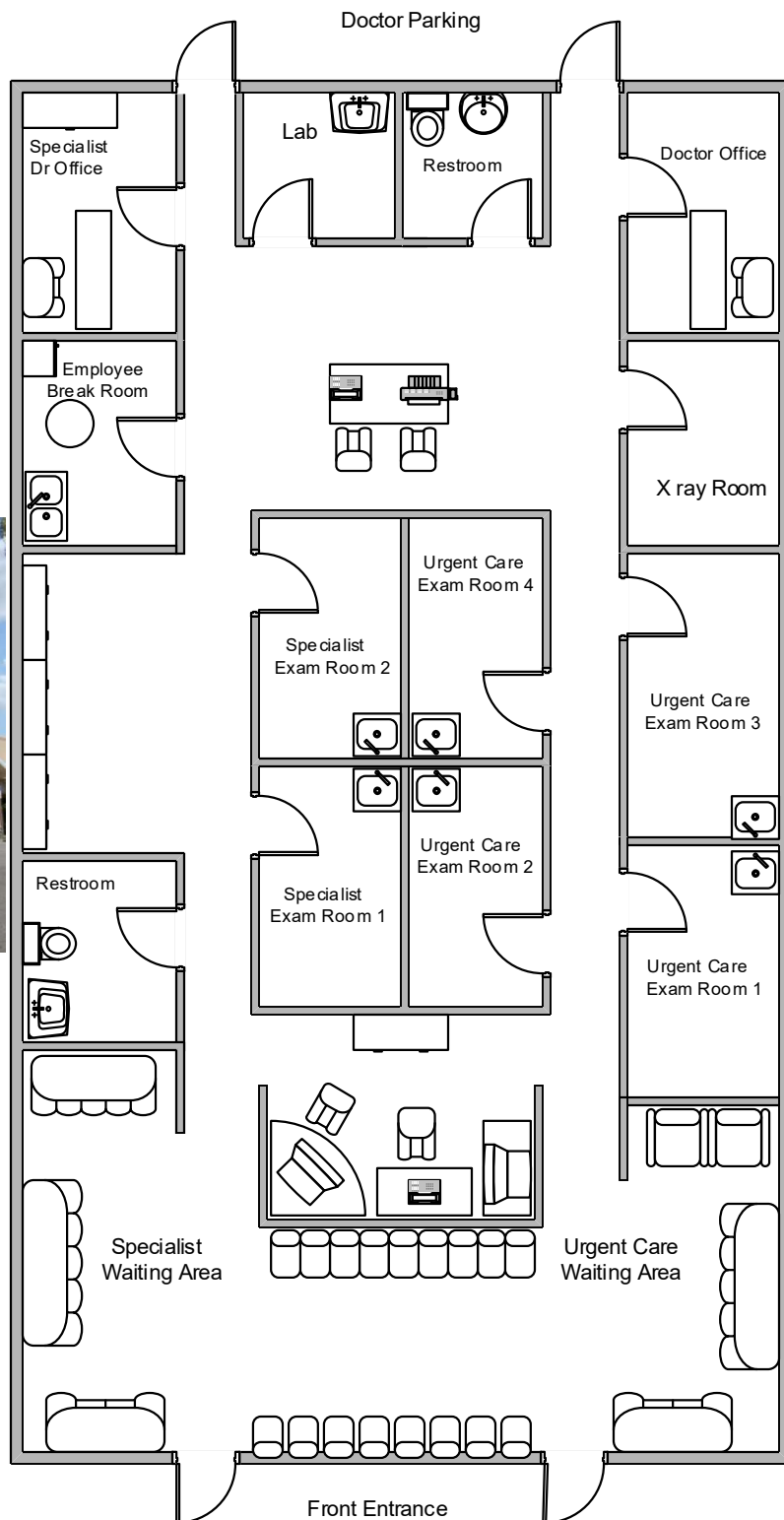
*Urgent Care/Specialist*

*Proposed 2,200 sq ft*

*Leasable Area 40' x 55'*



- ✓ Ample Parking
- ✓ Desirable Location
- ✓ Lighted Intersection
- ✓ Walking distance to Shoppes and Courthouse



This plot plan is for location purposes only. It shall not be relied on for any other purpose

Information contained herein deemed reliable but not warranted



165 S Lee Street, Suite 100, Labelle, Florida 33935 Telephone: 561-996-8080

[www.theroyalcompanies.com](http://www.theroyalcompanies.com)

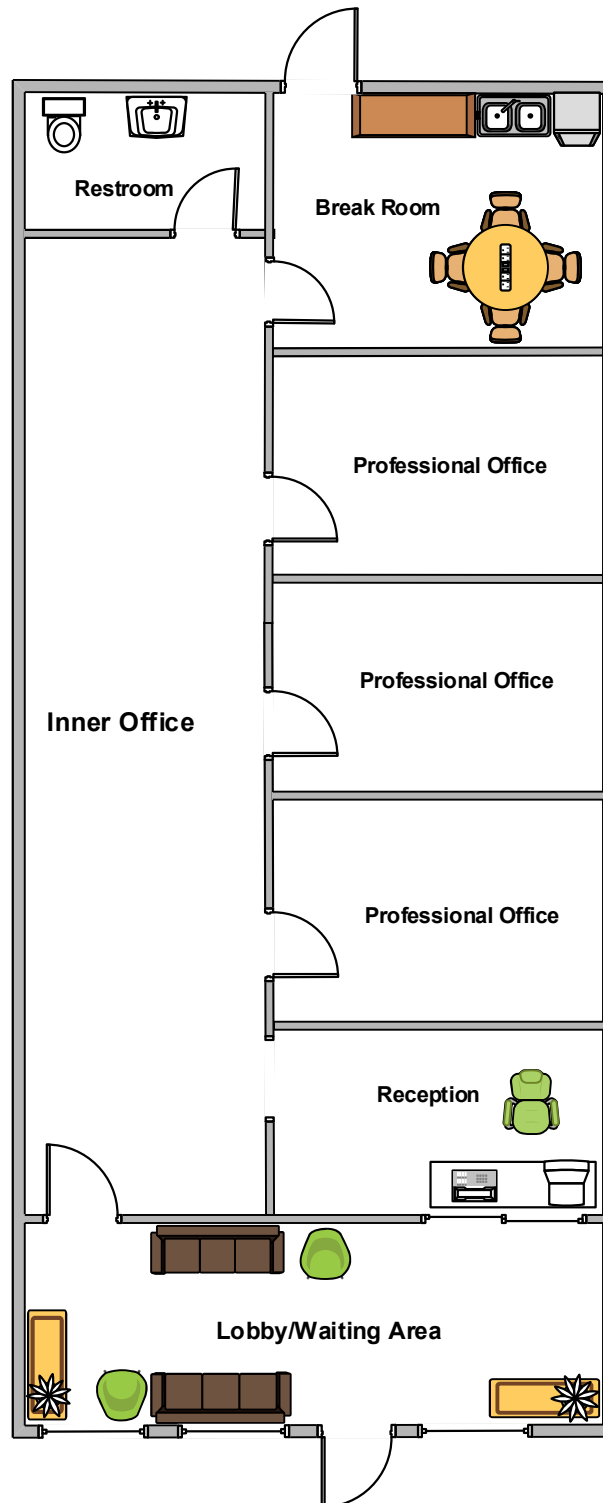


THE  
ROYAL  
COMPANIES

Contact: Steve Royal  
561-996-8080 ext 107  
[steve.royal@theroyalcompanies.com](mailto:steve.royal@theroyalcompanies.com)

Courthouse Square  
175 S Lee Street  
Labelle, Fl

Building Two  
Proposed 1,100 Sq Ft  
20' x 55'



This plot plan is for location purpose only. It shall not be relied on for any other purpose

Information contained herein deemed reliable but not warranted

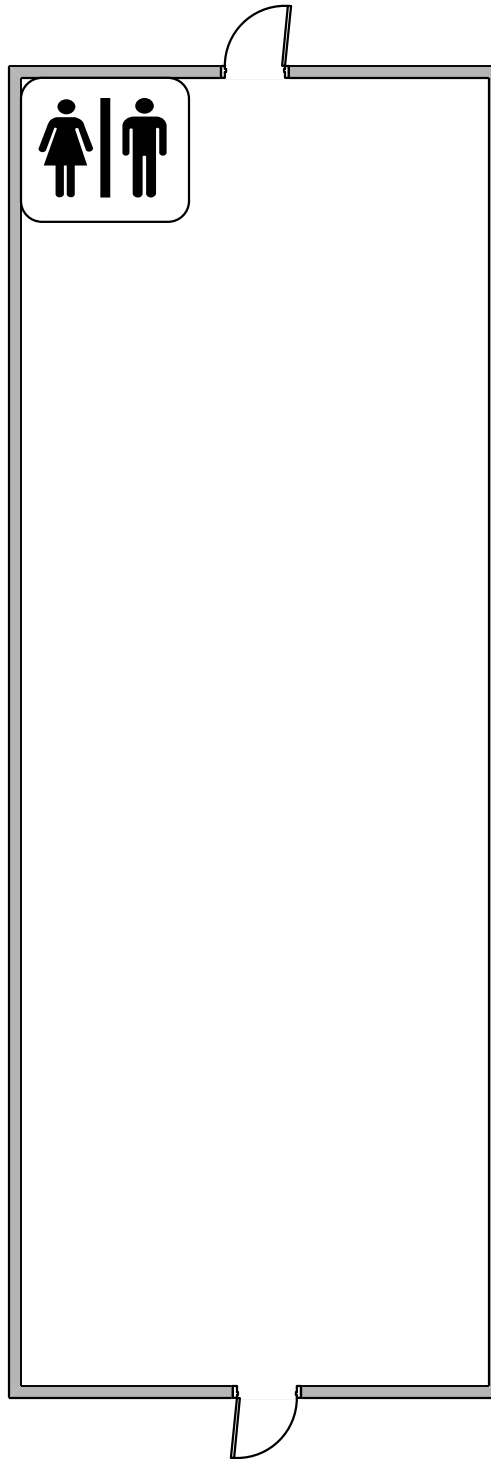


165 S Lee Street, Suite 100, Labelle, Florida 33935 Telephone: 561-996-8080  
[www.theroyalcompanies.com](http://www.theroyalcompanies.com)



THE  
ROYAL  
COMPANIES

Contact: Steve Royal  
561-996-8080 ext 107  
[steve.royal@theroyalcompanies.com](mailto:steve.royal@theroyalcompanies.com)



Courthouse Square  
175 South Lee Street  
Labelle, FL 33935

20' wide x 55' deep  
= 1,100 sf  
Scale 1/8" = 1'

Front facing 165 South Lee

This plot plan is for location purposes only. It shall not be relied on for any other purpose

Information contained herein deemed reliable but not warranted



165 S Lee Street, Suite 100, Labelle, Florida 33935 Telephone: 561-996-8080  
[www.theroyalcompanies.com](http://www.theroyalcompanies.com)