



**THE
ROYAL
COMPANIES**

Contact: Steve Royal
561-996-8080 ext 107
steve.royal@theroyalcompanies.com

LABELLE, FLORIDA



Area Facts:

- Population 21,558 in 20 min drive
- Average Household Income \$56,053
- Traffic Count 19,300



Information contained herein deemed reliable but not warranted



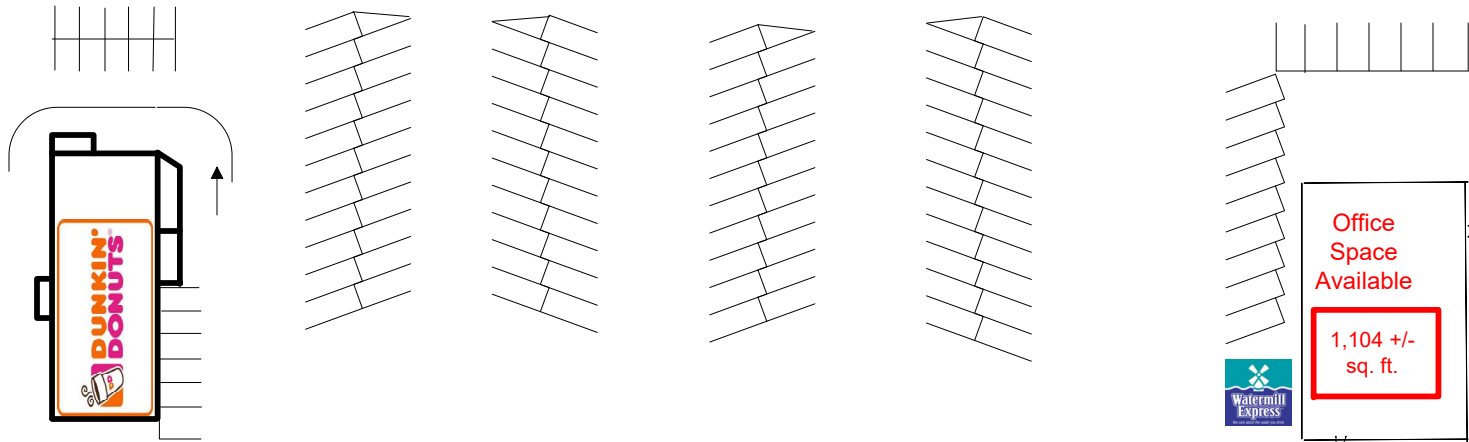
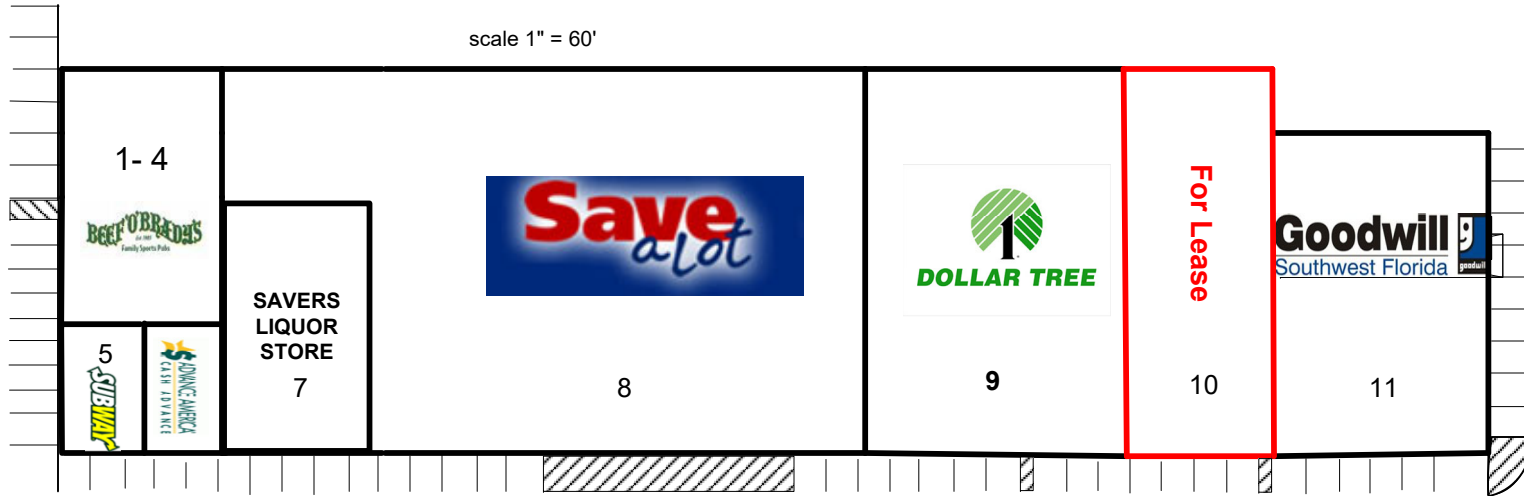
165 S Lee Street, Suite 100, Labelle, Florida 33935 Telephone: 561-996-8080
www.theroyalcompanies.com



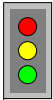
THE ROYAL COMPANIES

Contact: Steve Royal
561-996-8080 ext 107
steve.royal@theroyalcompanies.com

scale 1" = 60'



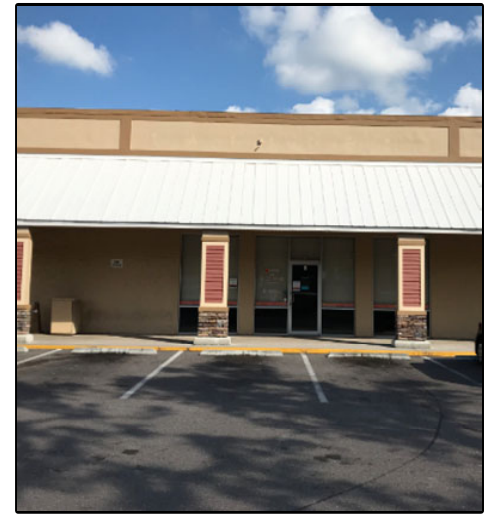
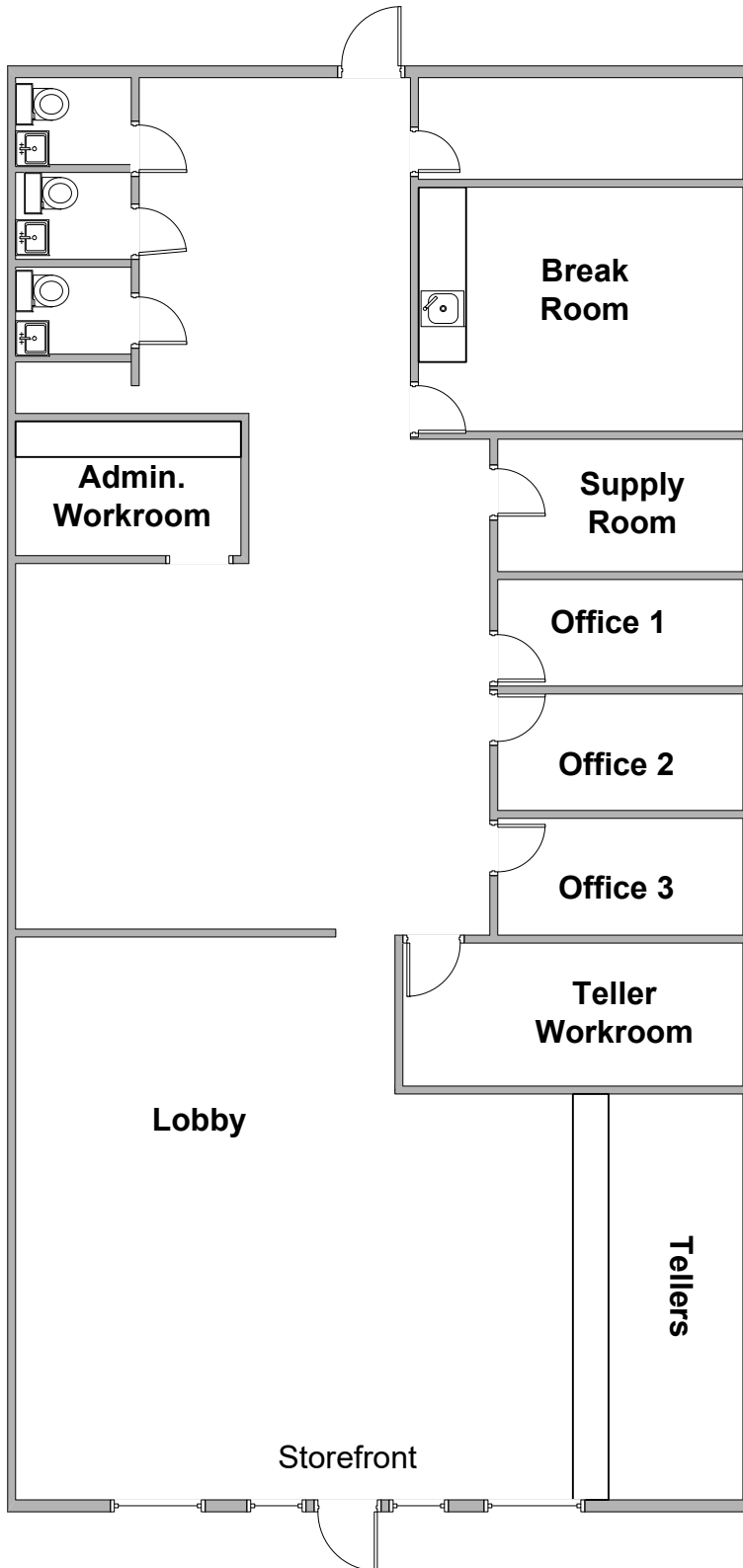
- 1- 4 Beef O Brady's
- 5. Subway
- 6. Advance America
- 7. Savers Liquor Store
- 8. Save-A-Lot
- 9. Dollar Tree
- 10. Available 4,600 sf**
- 11. Goodwill of South West Florida





Labelle Plaza

Unit 10
4,600 Sq Ft



- Former Banking Institution
- Pylon Signage Available
- Flexible Space Configuration
- Desirable Location
- Ample Parking

