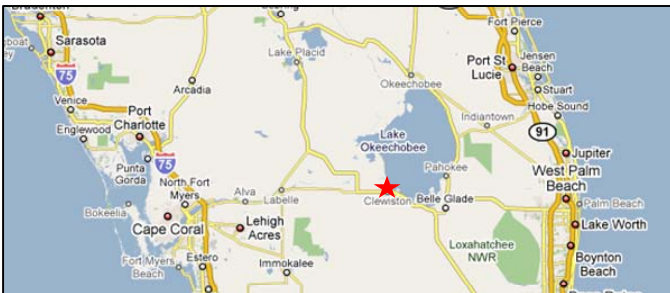


Sugarland Plaza

Clewiston, Florida



Excellent Exposure on US Hwy 27 / SR 80
US Hwy 27 is the North-South central corridor
connecting I 4 to Miami
SR 80 is the East-West corridor connecting
West Palm Beach to Fort Myers



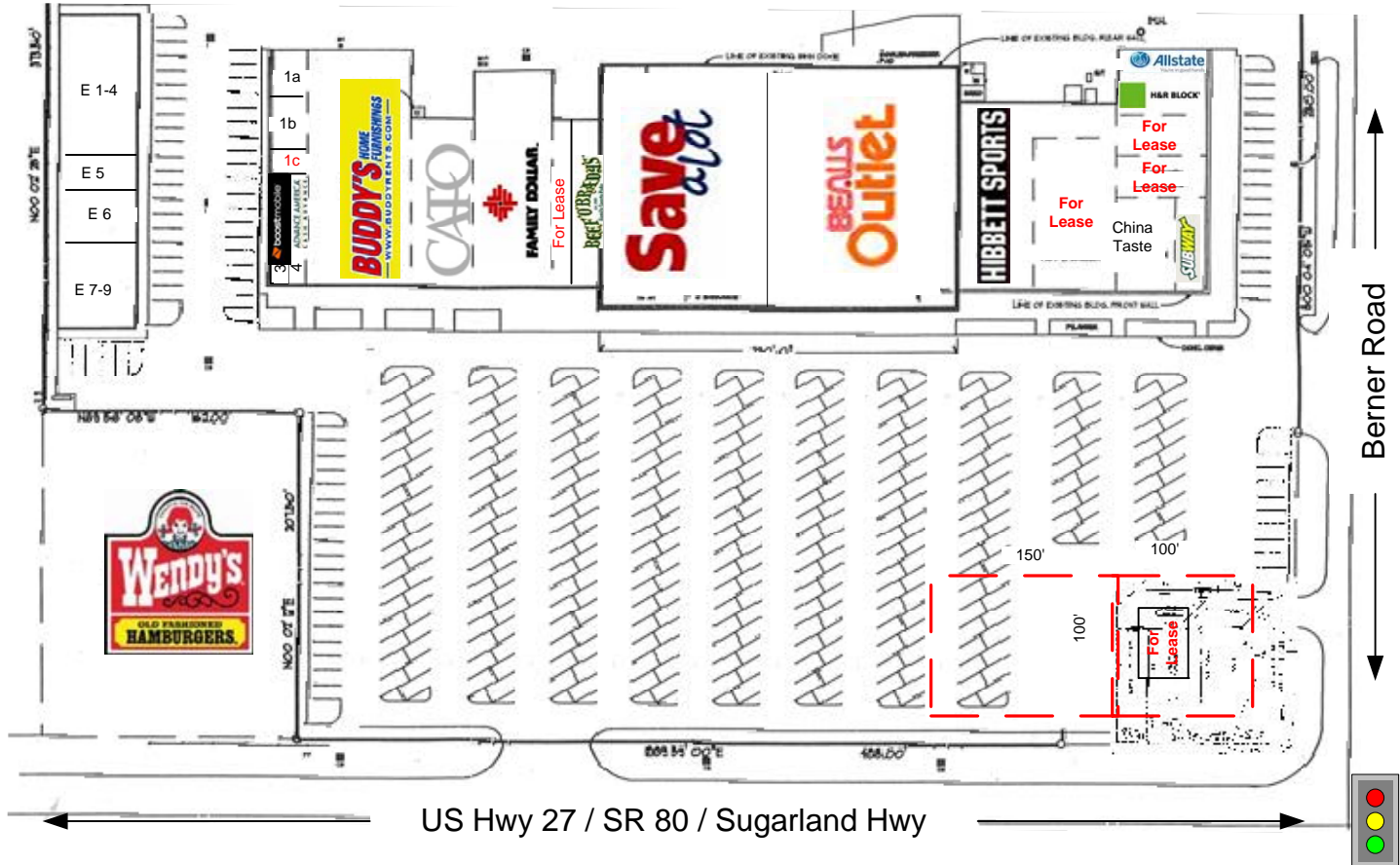
Area Facts:

- * 2010 Traffic Counts
21,000
- * 2010 Population 14,748
within 5 miles
- * 2010 Average Household
Income \$55,601 within 5
miles

Information contained herein deemed reliable but not warranted

Sugarland Plaza

Clewiston, Florida



E 1-4 Fresenius Medical Care
E 5 Independent Newspaper
E 6 Lovely Nails
E 7-9 Eye Center

1A H & M Dental
1B SW Foot and Ankle Care
1C Medical Office 910 sf
3 Boost Mobile
4. Advanced America
5. Buddy's Rents
6. Cato
7. Family Dollar

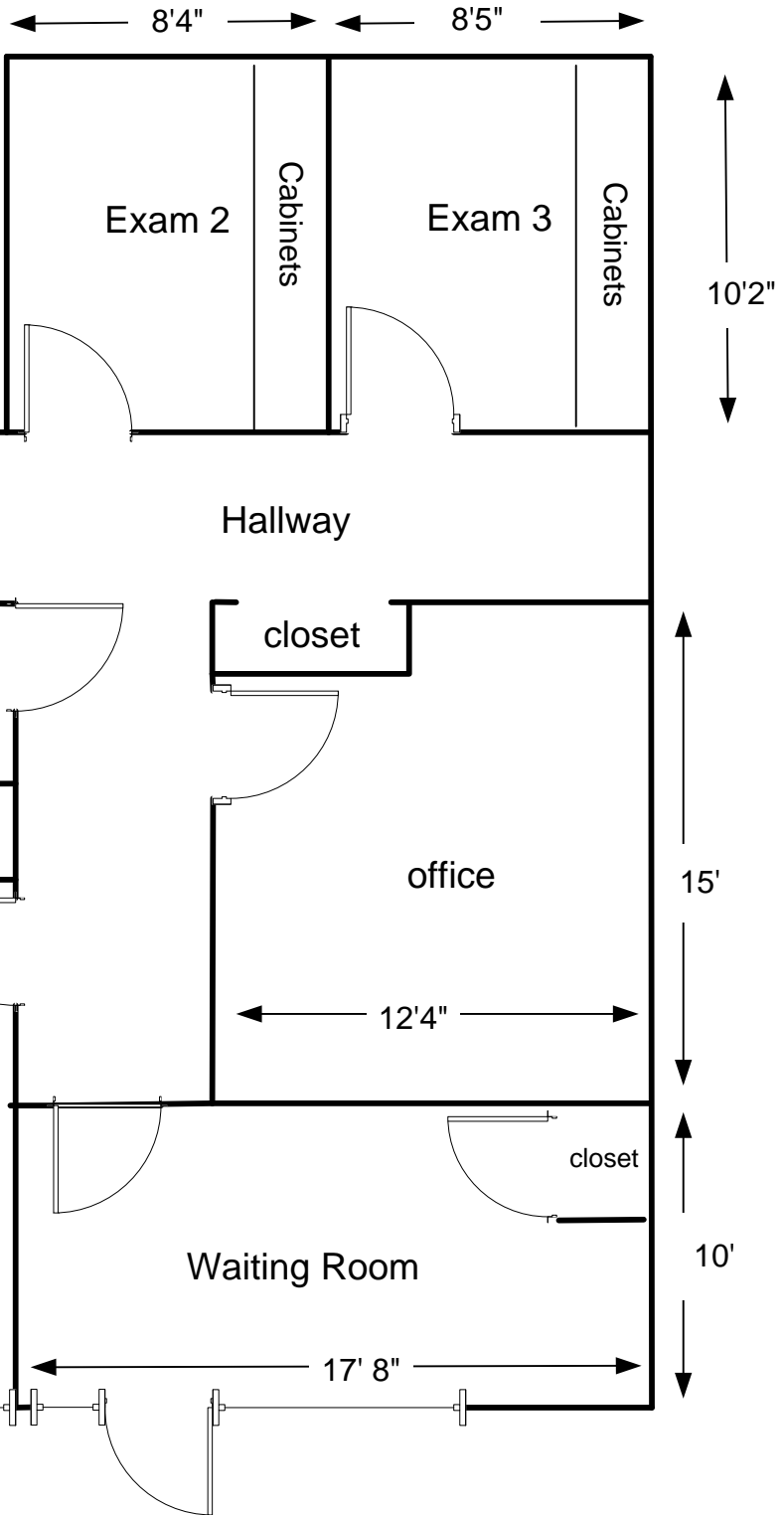
8. For Lease - 3000 sf
9. Beef O' Brady's
10. Save A Lot
11. Beal's Outlet
12. Hibbett Sports
13. For Lease - 4500 sf
14. China Taste
15. Subway
16. For Lease - 1600 sf
17. For Lease - 1600 sf
18. H & R Block
19. Hughes Insurance

Out Parcels Available:
* Out Parcel 1
Building 1,750 sf
Lot Size 100' x 100'
* Out Parcel 2
Lot Size 150' x 100'
* Both lots can be combined

Information contained herein deemed reliable but not warranted

Sugarland Plaza

Unit 1C
910 sq ft +/-



Contact: Steve Royal 561.996.8080 x 71
Steve.royal@theroyalcompanies.com



Sugarland Plaza

Unit 8
3,000 sf +/-



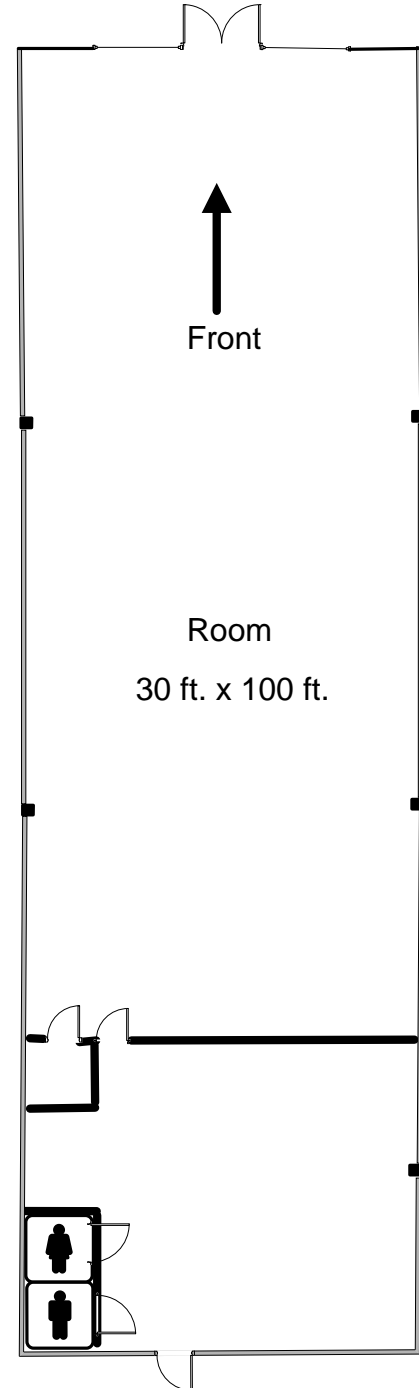
High Visibility!

Unit facing SR 80
Drop ceiling height is 10' 11"
Truss height is 19' 3"
200 amp panel

Contact: Steve Royal

561-996-8080 ext 71

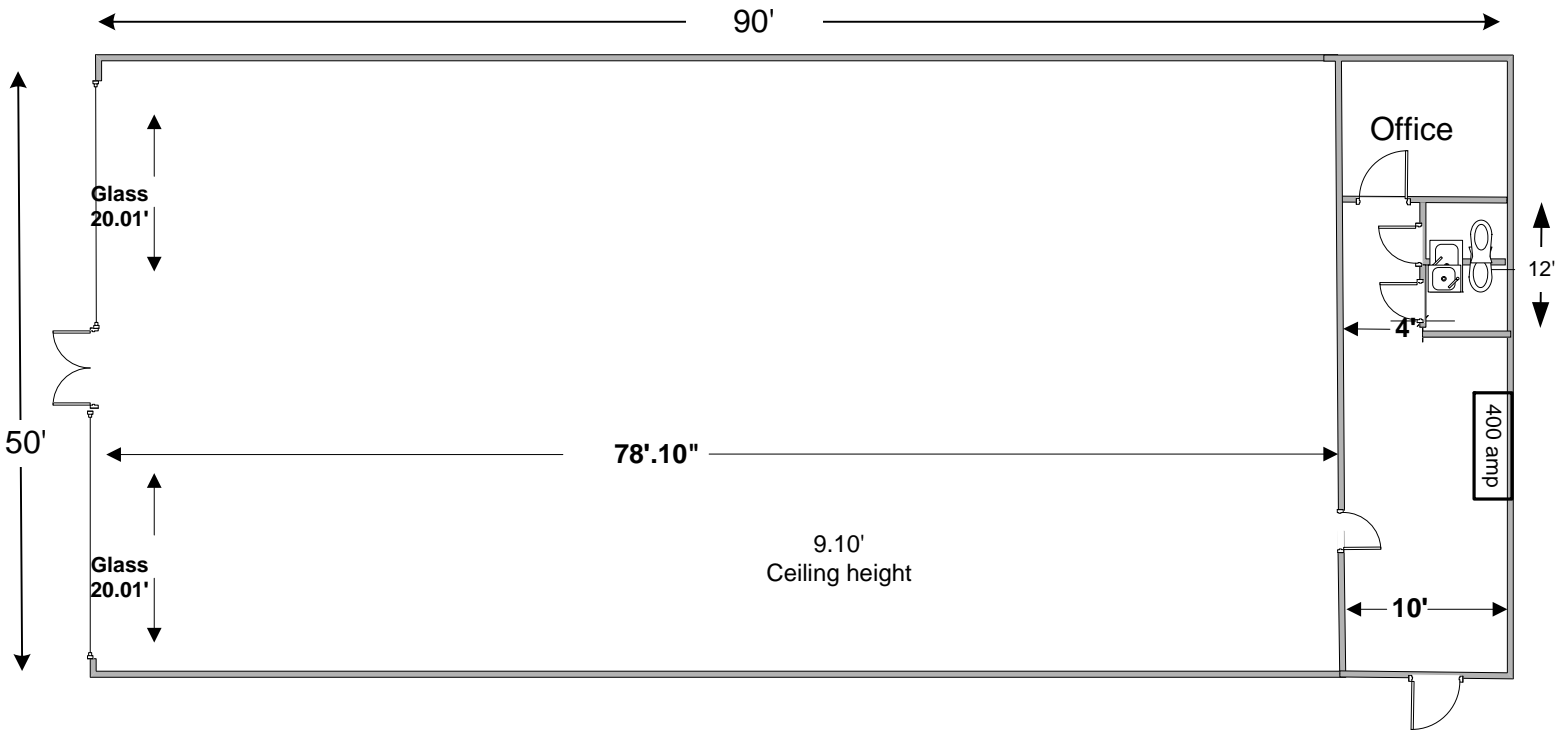
steve.royal@theroyalcompanies.com





Sugarland Plaza

Unit 13
4,500 sq. ft. +/-



Contact Steve Royal
561.996.8080 ext.71

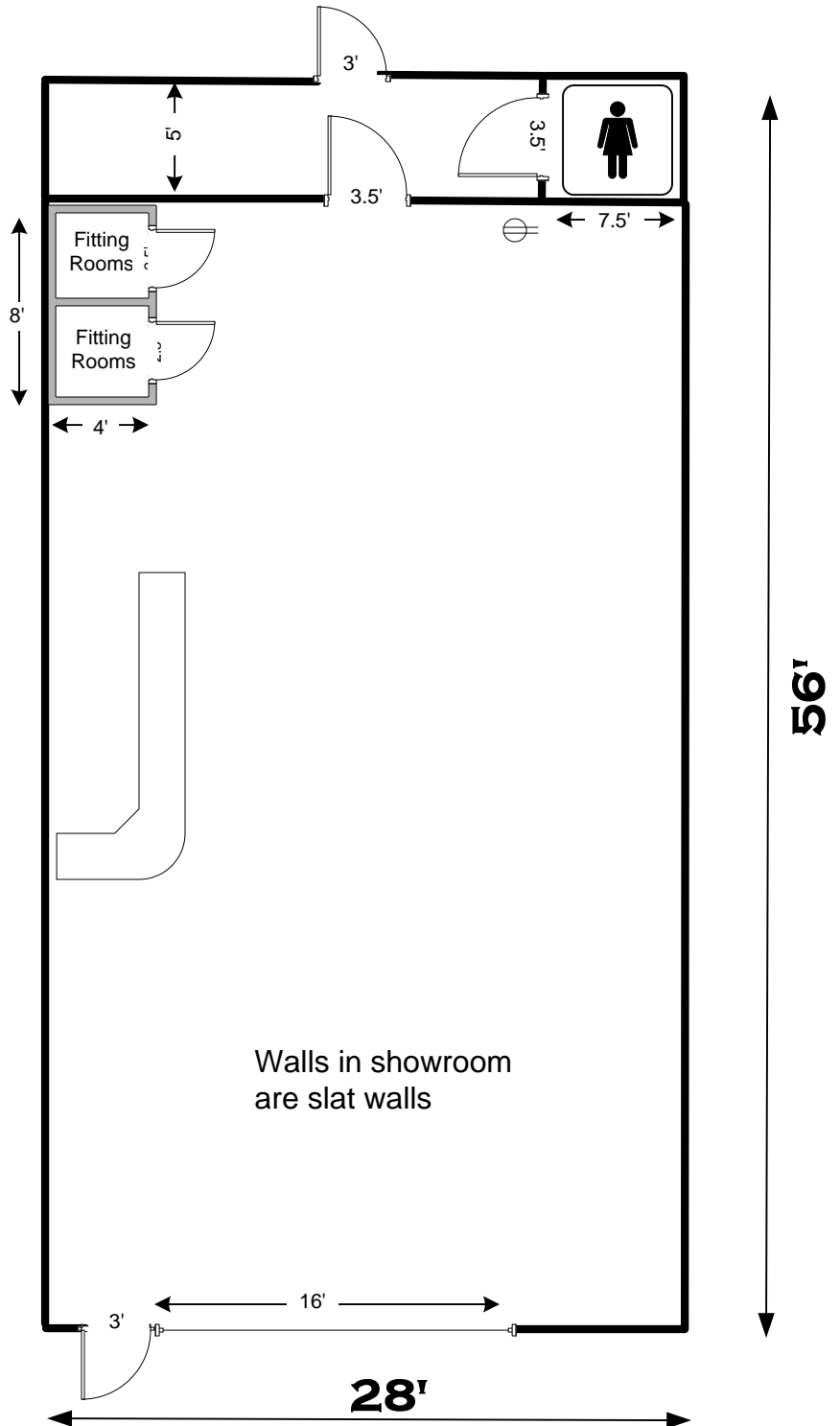
steve.royal@theroyalcompanies.com

The information above has been obtained from sources believed reliable. While we do not doubt its accuracy we have not verified it and make no guarantee, warranty or representation about it. It is your responsibility to independently confirm its accuracy and completeness. Any projections, opinions, assumptions, or estimates used are for example only and do not represent the current or future performance of the property. The value of this transaction to you depends on tax and other factors which should be evaluated by your tax, financial, and legal advisors. You and your advisors should conduct a careful, independent investigation of the property to determine to your satisfaction the suitability of the property for your needs.



Sugarland Plaza

Unit 16
1,568 sf +/-



Contact: Steve Royal

561.996.8080 x 71

steve.Royal@theroyalcompanies.com

The information above has been obtained from sources believed reliable. While we do not doubt its accuracy we have not verified it and make no guarantee, warranty or representation about it. It is your responsibility to independently confirm its accuracy and completeness. Any projections, opinions, assumptions, or estimates used are for example only and do not represent the current or future performance of the property. The value of this transaction to you depends on tax and other factors which should be evaluated by your tax, financial, and legal advisors. You and your advisors should conduct a careful, independent investigation of the property to determine to your satisfaction the suitability of the property for your needs.



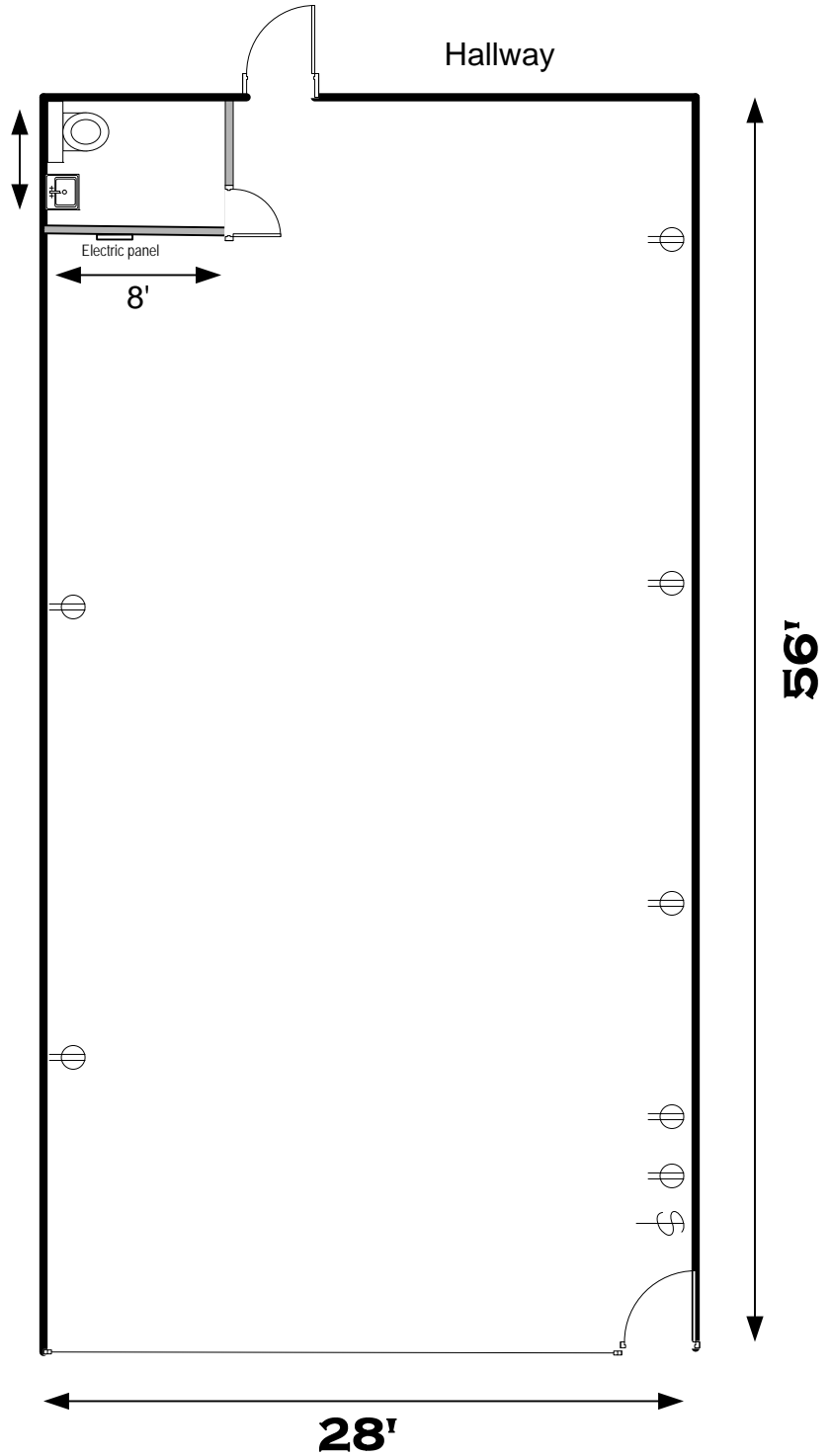
Sugarland Plaza

1/8" = 1'

Unit 17
1,568 sf +/-



5'10"



Contact: Steve Royal

561.996.8080 x 77

steve.royal@theroyalcompanies.com

The information above has been obtained from sources believed reliable. While we do not doubt its accuracy we have not verified it and make no guarantee, warranty or representation about it. It is your responsibility to independently confirm its accuracy and completeness. Any projections, opinions, assumptions, or estimates used are for example only and do not represent the current or future performance of the property. The value of this transaction to you depends on tax and other factors which should be evaluated by your tax, financial, and legal advisors. You and your advisors should conduct a careful, independent investigation of the property to determine to your satisfaction the suitability of the property for your needs.